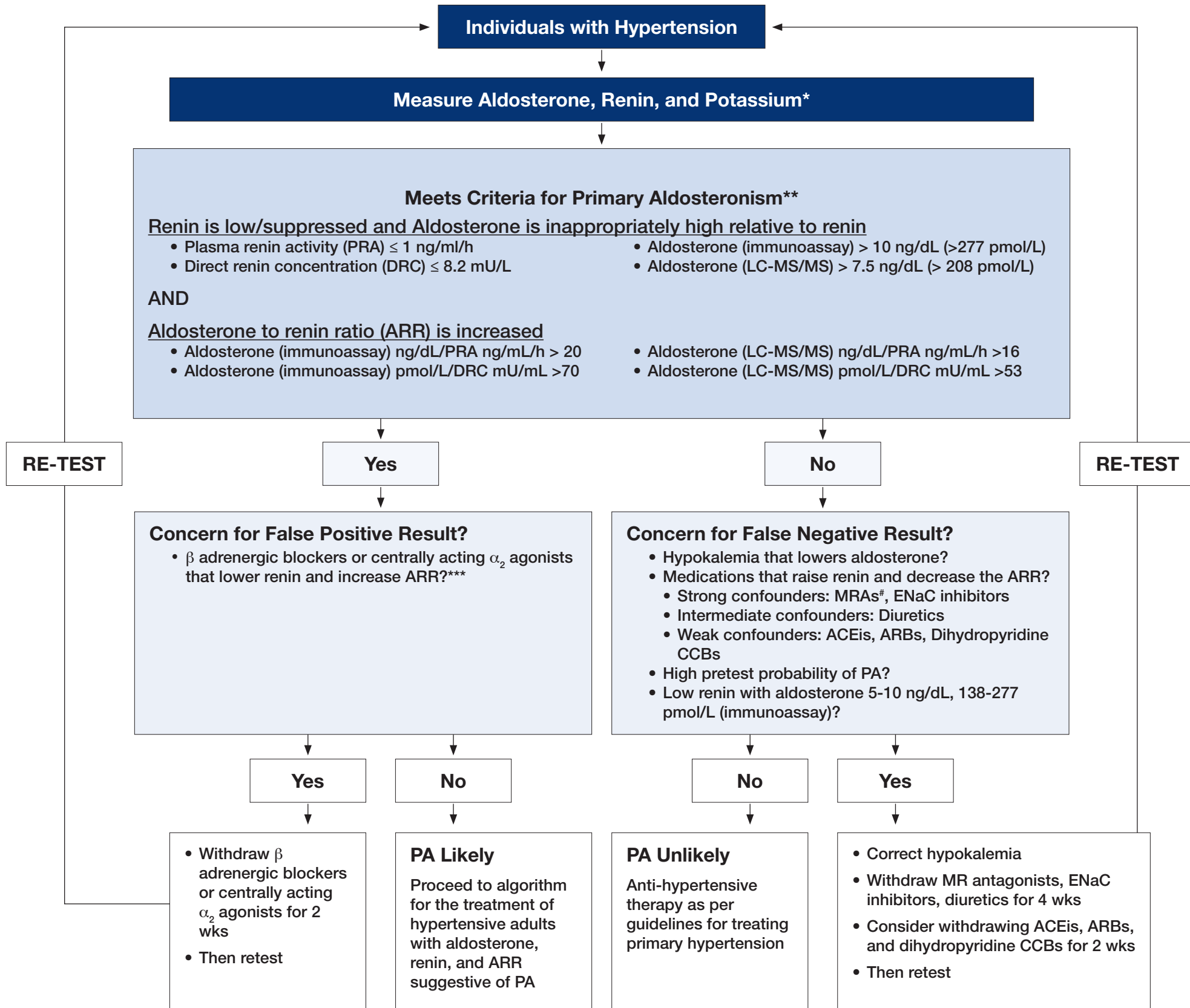


Figure 1. How to Screen for PA in Individuals with Hypertension.



*Ideally in seated position in the morning; ideally without venous stasis (release tourniquet after venipuncture and wait at least 5 seconds before withdrawing blood) to avoid factitious rises in potassium.

**Aldosterone and renin cutoffs are provided for guidance; however, laboratory-specific values may be used if available.

***Consider potential false positive induced by β blockers when aldosterone < 15 ng/dL by immunoassay, < 10 ng/dL by LC-MS/MS.

Drosiprenone in OCPs is an MRA.